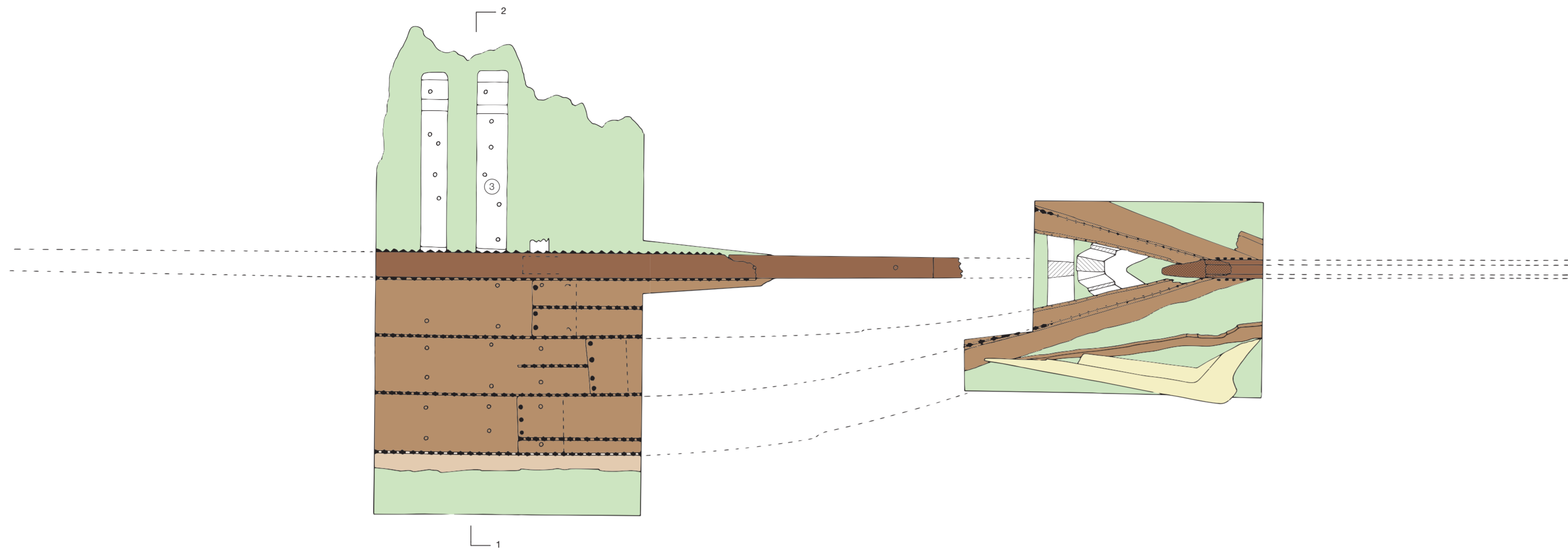
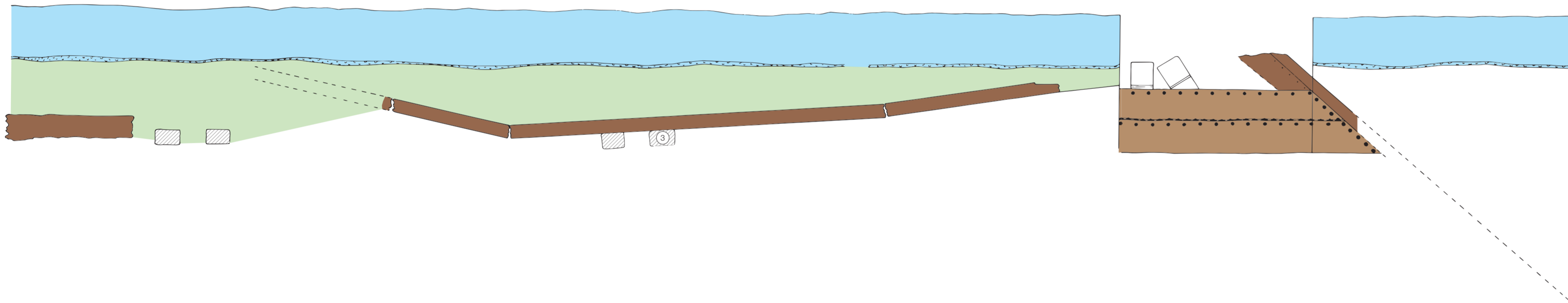


A. Top view



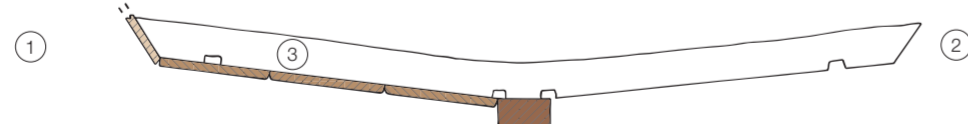
B. Longitudinal section



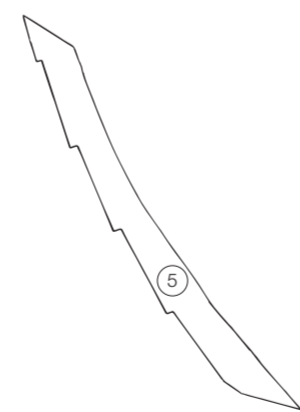
C. Cross-section



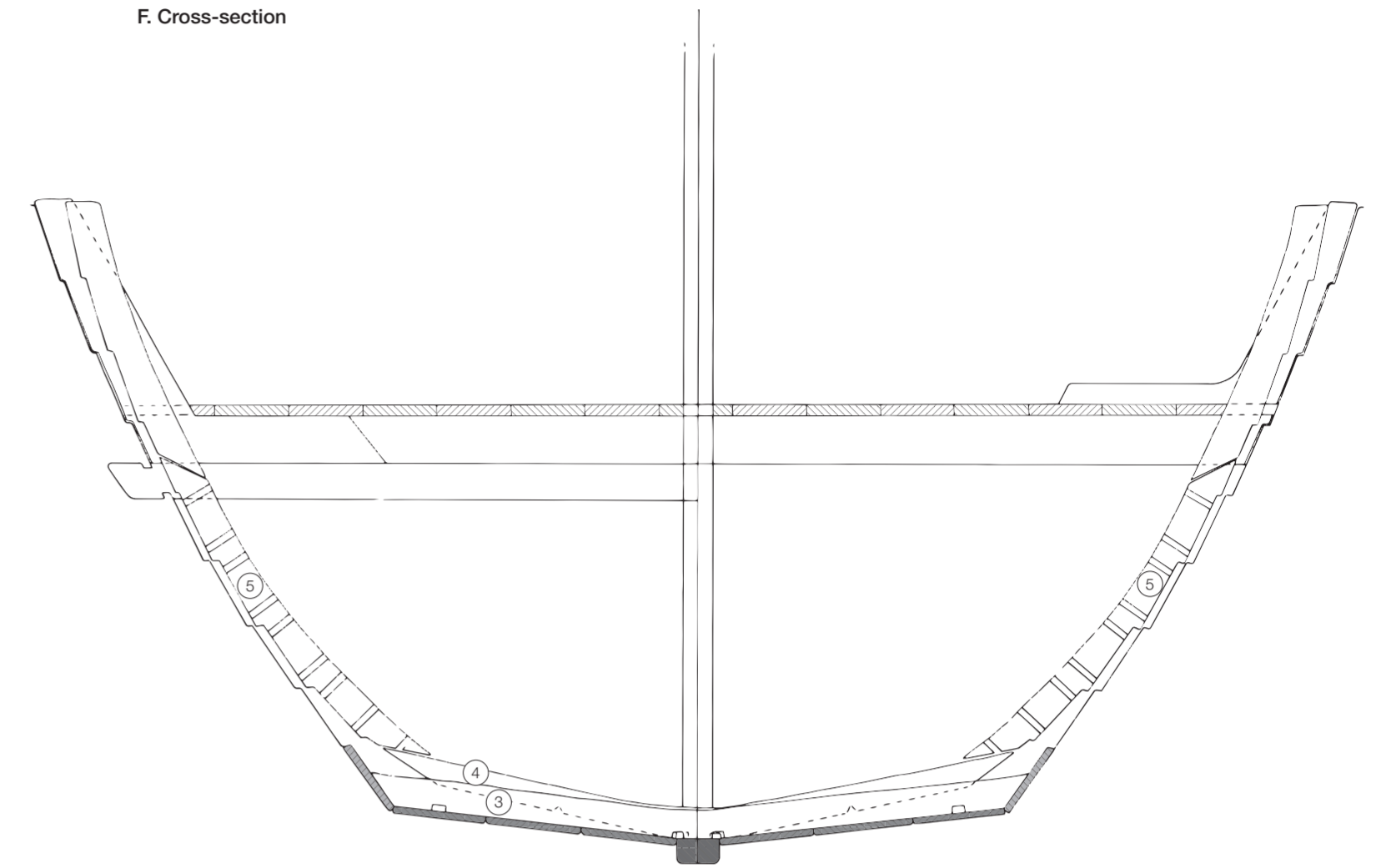
D. Detached floor timber



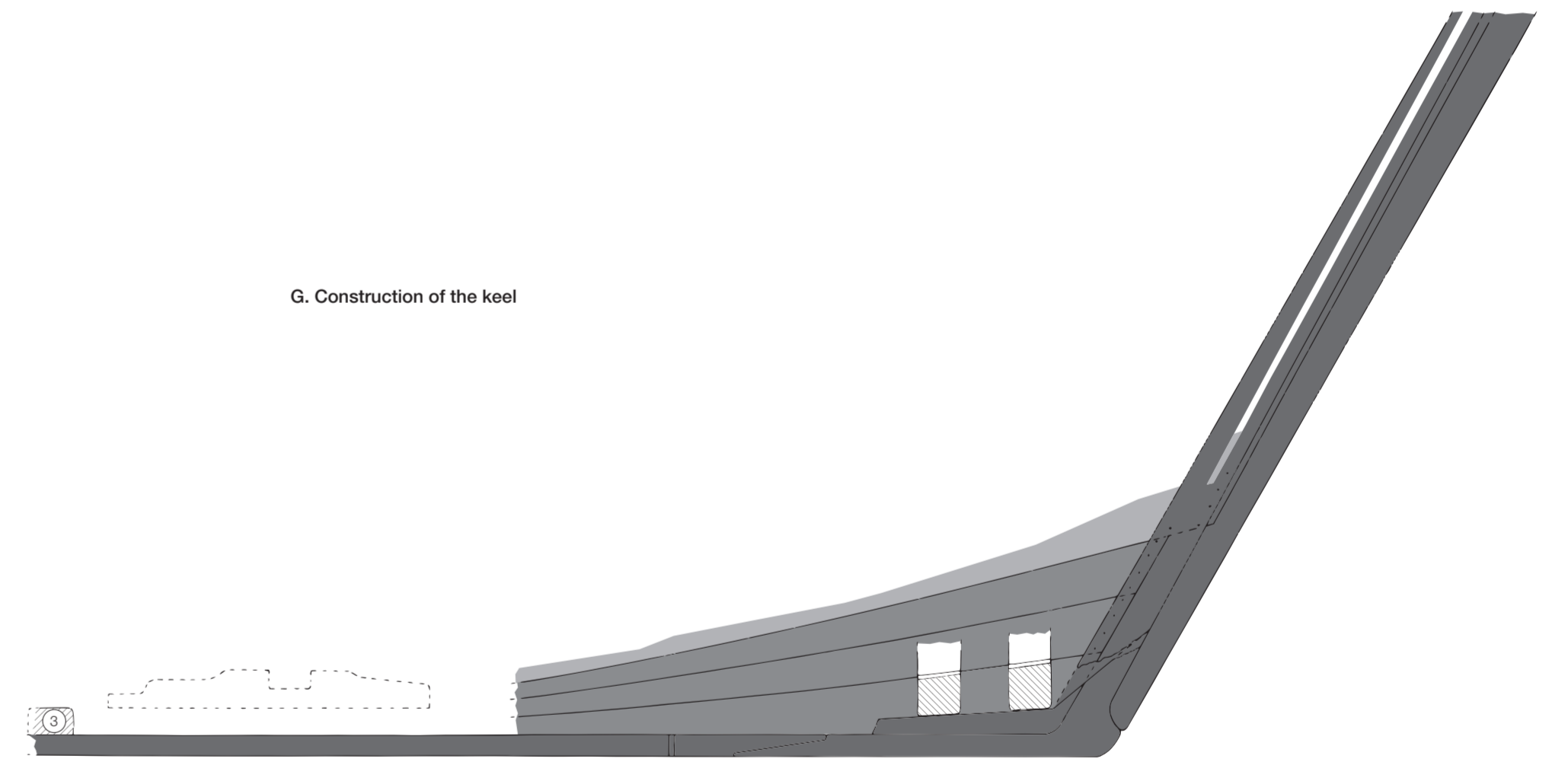
E. Detached futtock



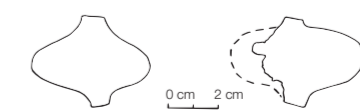
F. Cross-section



G. Construction of the keel



H. Sintel clamp



**Legend to A-E**

- Keel, stempost
- Bottom planking
- Planking of the sides
- Frames
- Zuiderzee-clay deposits
- Almere-clay deposits
- Cross-cut wood
- Broken-off stempost
- Frame number

**Legend to F-H**

- Keel, stem hook, stempost, false stern
- Bottom planking
- Planking of the sides
- Frames, (on the left) protruding crossbeam construction (on the right) connecting beam and deck beam, mast, deck planks
- Cross-cut wood
- Corresponding parts in drawings A to G

**Field drawings**

- A. Top view of the trial trenches and area.
- B. Longitudinal section with soil profile.
- C. Cross-section at the foremost midship floor timber.
- D. The detached V-shaped floor timber from the forebody.
- E. The detached futtock.

**Reconstruction drawings**

- F. Cross-section amidships.
- G. Construction of the keel with stem hook and stempost, and the position and possible dimensions of a short mast step in dashed outline.
- H. The sintel-clamp model used here: transitional type D/E.

